

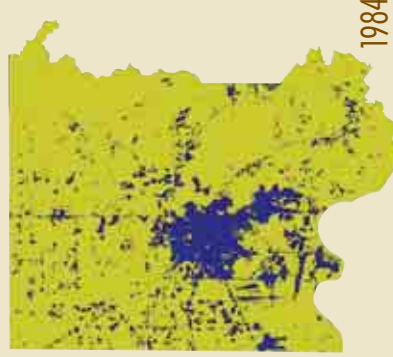
A LOCAL PERSPECTIVE

USING A GREENPRINT FOR GROWTH

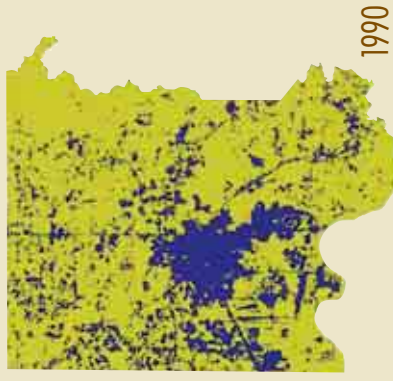
The Huntsville/Madison County area of Alabama is a prime example of the dramatic conversion of land use that has occurred over the last 20 years in the Southeast. Undeveloped land is being transformed at an unprecedented rate into subdivisions, shopping centers and other urban infrastructure. The area of developed land has doubled in just 16 years. Through rapid urban-

ization, Madison County is facing the loss of wetlands, forests, wildlife habitat and agricultural lands forever.

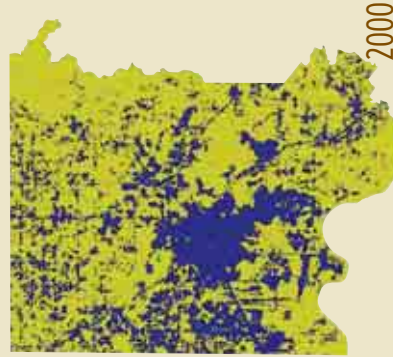
To determine development growth patterns in Madison County and to identify the types of land uses, The Land Trust of Huntsville & North Alabama solicited a research project from Dr. Charles Laymon at Universities Space Research Association with the National Space Science and Technology Center. Dr. Laymon created a set of georeferenced maps that show the changes in land cover and land use from the mid 1980's through 2000 with projections to the year 2020.



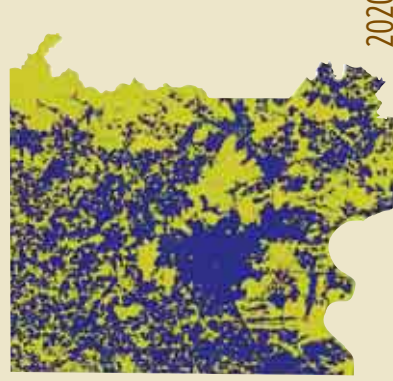
1984



1990



2000



2020

Developed Land
Undeveloped Land

Source: Landtrust for Huntsville and North Alabama

A REGIONAL PERSPECTIVE

LAND CONSUMPTION IN THE SOUTHEAST

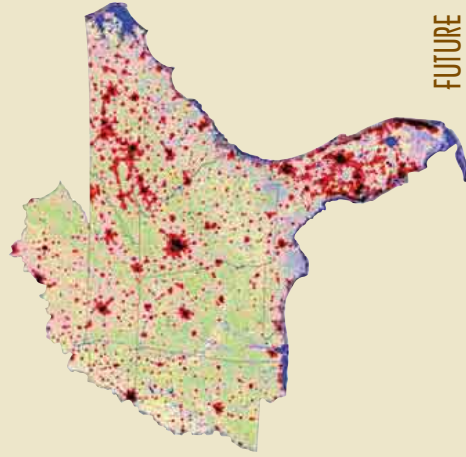
According to the U.S. Environmental Protection Agency:

In the 1990's, the Southeast lost more forests, farms and open space to urban sprawl than any other region of the country.

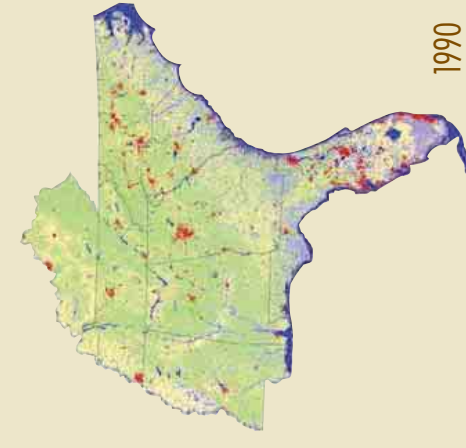
5 out of 10 states with greatest amount of land developed 1992 – 1997 are in Southeast

Over 3.6 million acres developed 1992 – 1997 – that is over 720,000 acres per year

(Source: USDA)



FUTURE



1990

Map was generated using currently land use data, road data and city lights data. Red indicates areas of human activity and urban centers. Future projections modeled based upon typical development patterns, proximity to roads and population trends. (Source: U.S. EPA)