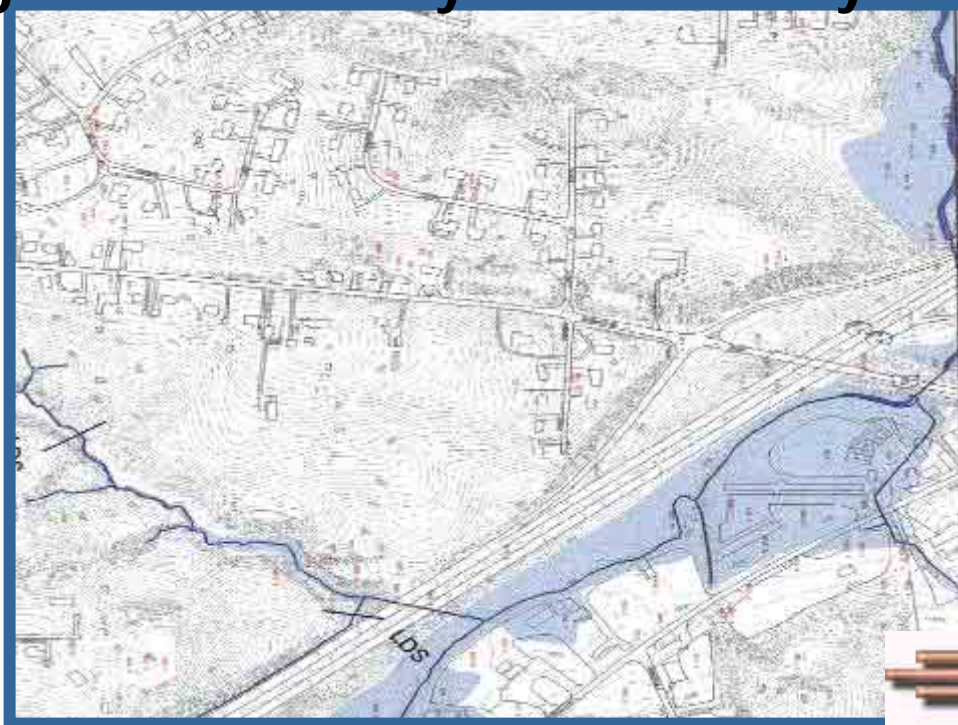
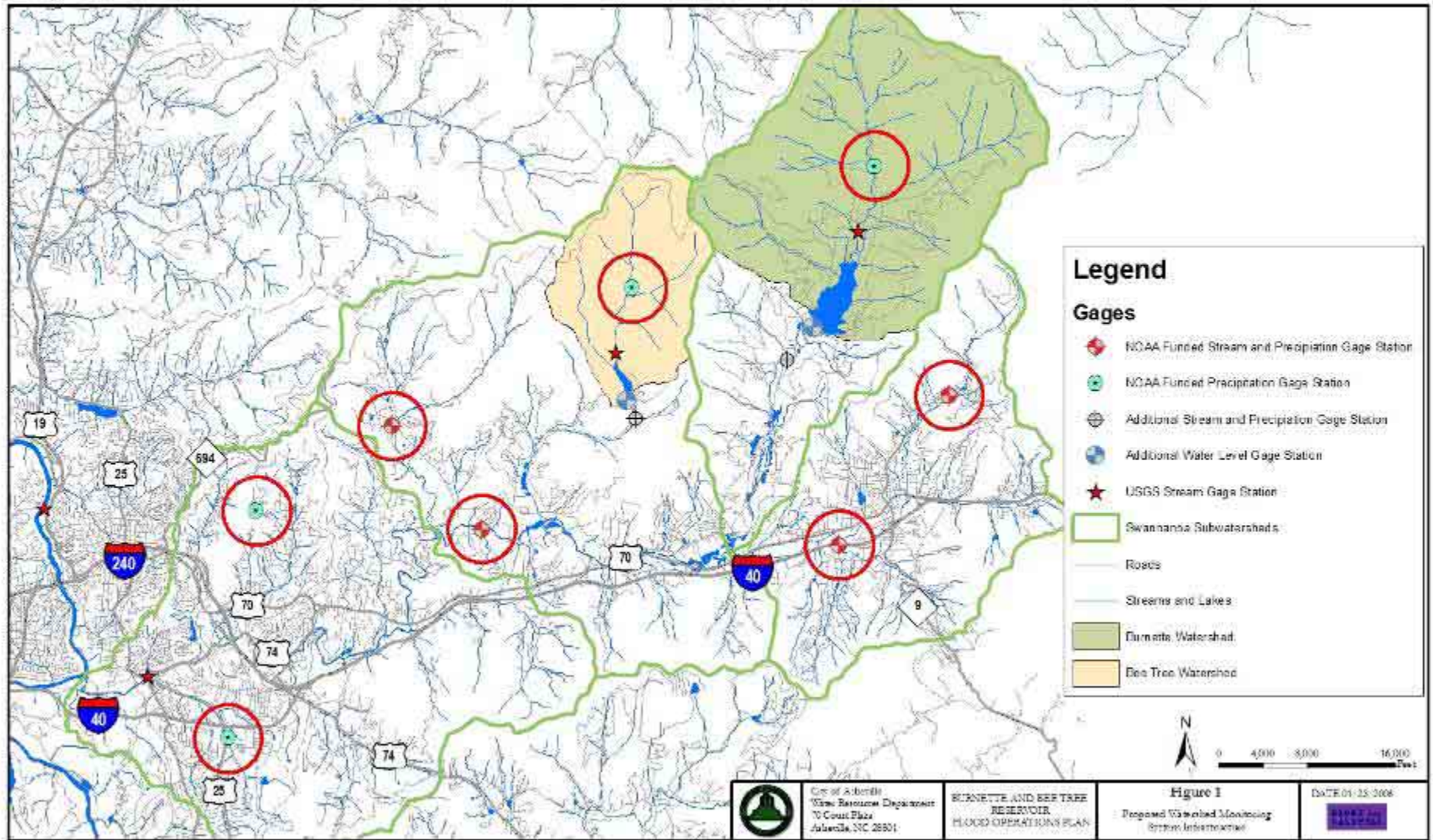


Flood Inundation Mapping

- Develops information for Emergency Action Plan
- Develops information for Flood Operations Plan
- Shows areas of potential flood inundation resulting from relatively small to very large storms



Flood Information System



Basis of Emergency Action Plan

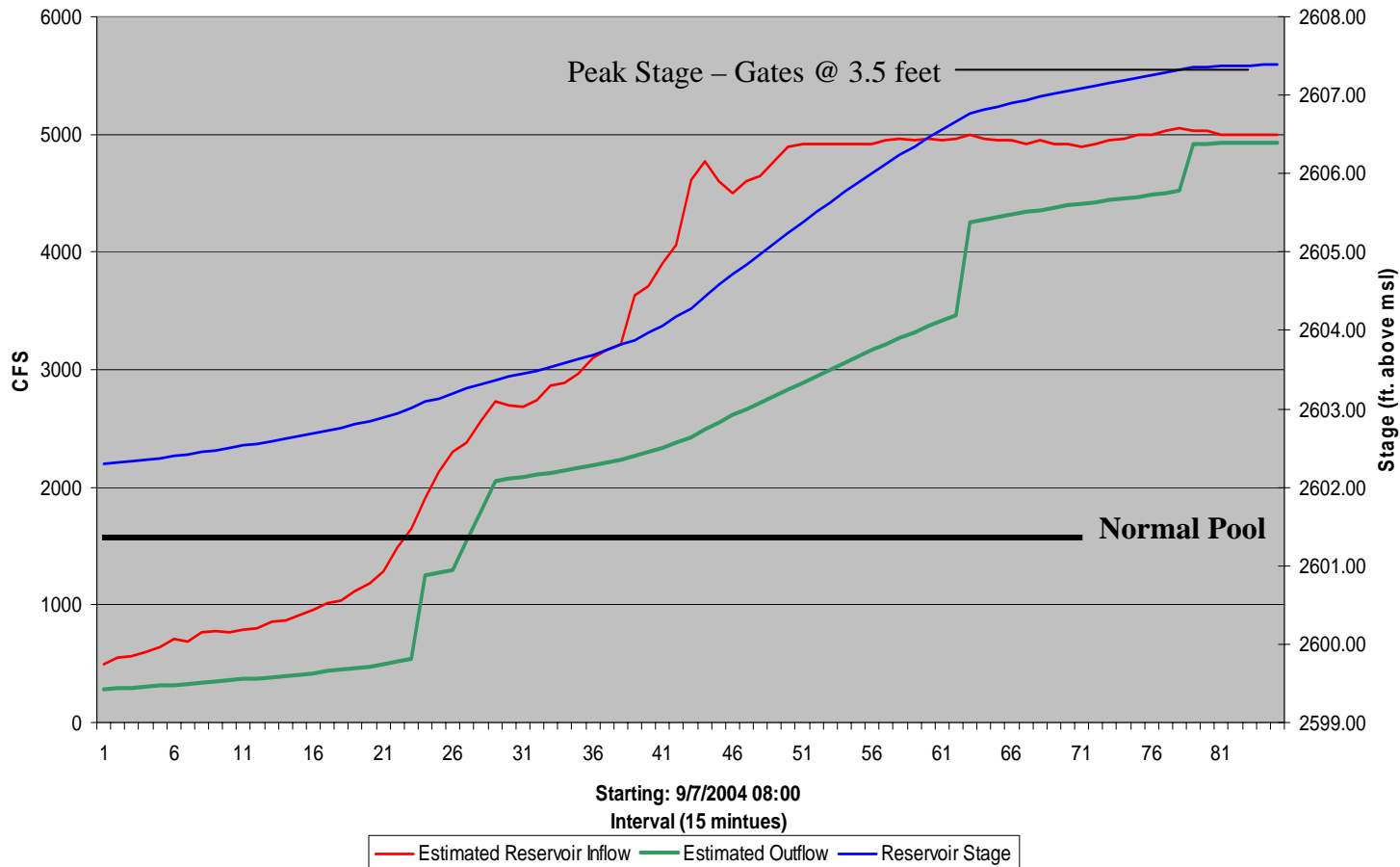
- Seasonal drawdown of Normal Pool
- Actions based on 120-, 72-, and 48-hour forecasts
- Improved communications with emergency management staff and the public
- Integration of real-time data for support of operations during the storm
- Clear delineation between Flood Operations and Emergency Action Plan



Emergency Action Plan

Inflow/outflow hydrograph from Francis

North Fork Reservoir



The flow into the reservoir.

The flow leaving the reservoir.

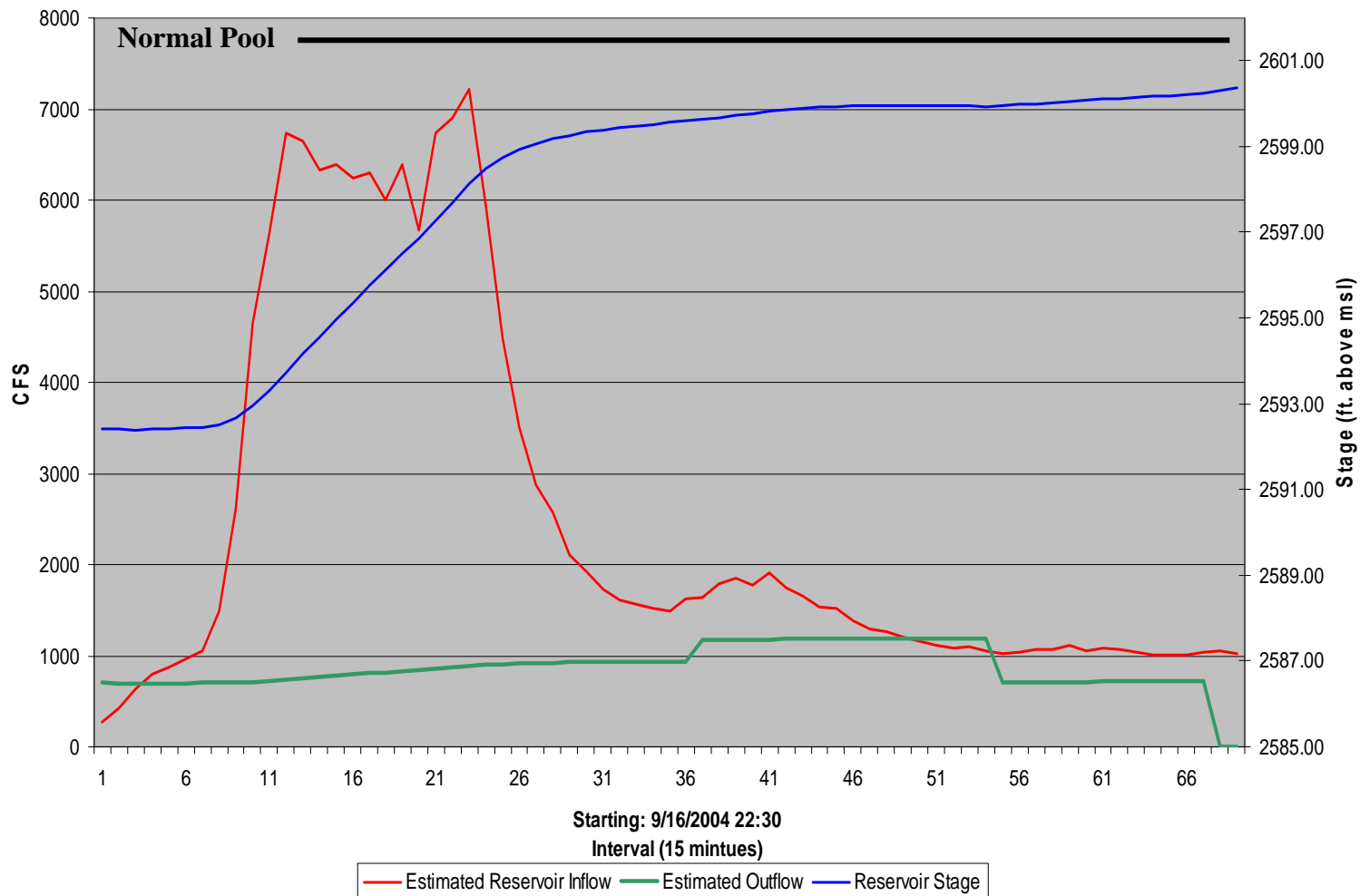
The reservoir level.



Flood Operations Plan

Ivan – A Flood Operations Example

North Fork Reservoir



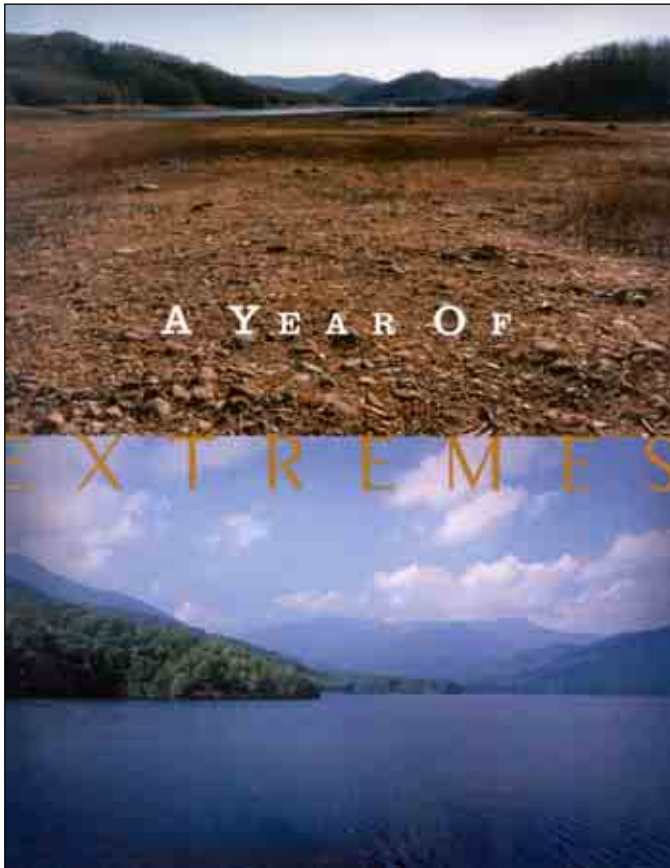
The flow into the reservoir.

The flow leaving the reservoir.

The reservoir level.



This project helps assure:



- Water resources are protected
- Flood damage is reduced
- Risk of dam breach is minimized
- Personnel are prepared
- Citizens are educated





Asheville, North Carolina



Asheville is Preparing for the Next Storm Season

City of Asheville projects underway:

- Biltmore Village Stormwater Planning
- Dingle Creek Stormwater Master Plan
- Flood Operations Planning
- Flood Warning System

