

Watershed Management Makes Good Financial Cents:

Development Tools for Sustainable Growth

2006 Southeast Watershed Roundtable & North Carolina State Roundtable




NC STATE UNIVERSITY

CAPE FEAR RIVER ASSEMBLY



We gratefully acknowledge our Roundtable Sponsors



CAPE FEAR RIVER ASSEMBLY 



Soil & Water
Environmental
Technology Center



MERCK FAMILY FUND
Protecting the Future Environment
Promoting Health and Growth



CH2MHILL



AMSIENT DESIGN GROUP
48 N. 2nd Street, Suite 100, Ashtons, NC, 28602
PH: 828.232.4550 FX: 828.232.4551
Email: info@AshtonsDesignGroup.com
Website: www.AshtonsDesignGroup.Com



NC STATE UNIVERSITY

COLLEGE OF
AGRICULTURE & LIFE SCIENCES
ACADEMICS • RESEARCH • EXTENSION

Southeast Watershed Forum

EPA Targeted Watershed Grantee for Capacity-Building



To build the capacity of communities and organizations to better protect their land & water resources

Issues of Concern

- The South has lost more forests, farms and open space to sprawl than any other region of the country
- Populations are projected to grow by 73% in the South Atlantic region and 46% in the Gulf states
- 34% of all NA fish species listed as endangered, threatened or special concern are found in the SE

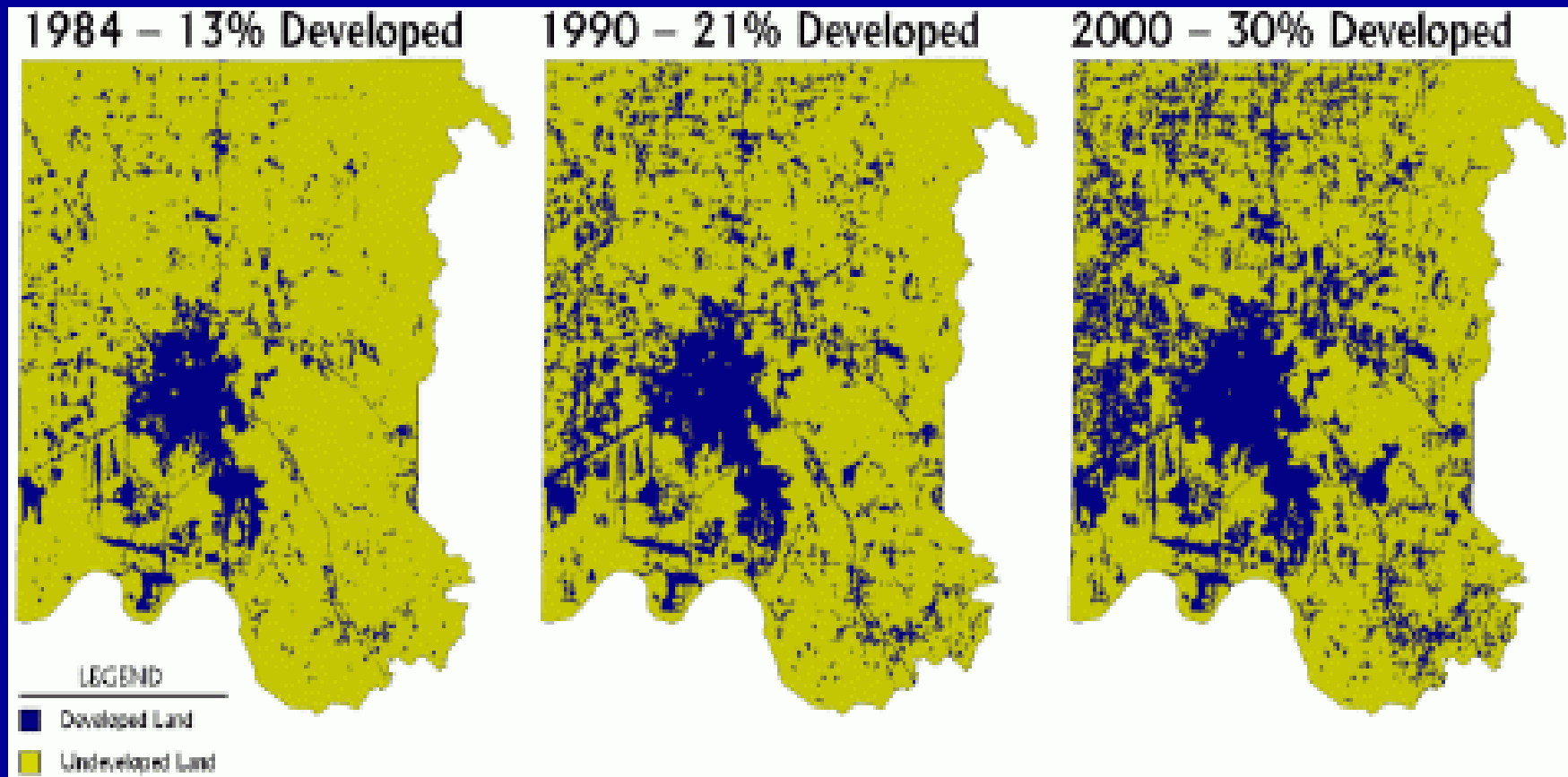


Southeastern Changes: over 5.5 million acres of cropland, forests, open land lost to suburban uses - 1992 – 1997 (USDA)

| | |
|----------------|-----------|
| Alabama | 445,300 |
| Florida | 945,300 |
| Georgia | 1,053,200 |
| Kentucky | 354,100 |
| Mississippi | 312,600 |
| North Carolina | 781,500 |
| South Carolina | 539,800 |
| Tennessee | 611,600 |
| Virginia | 467,400 |

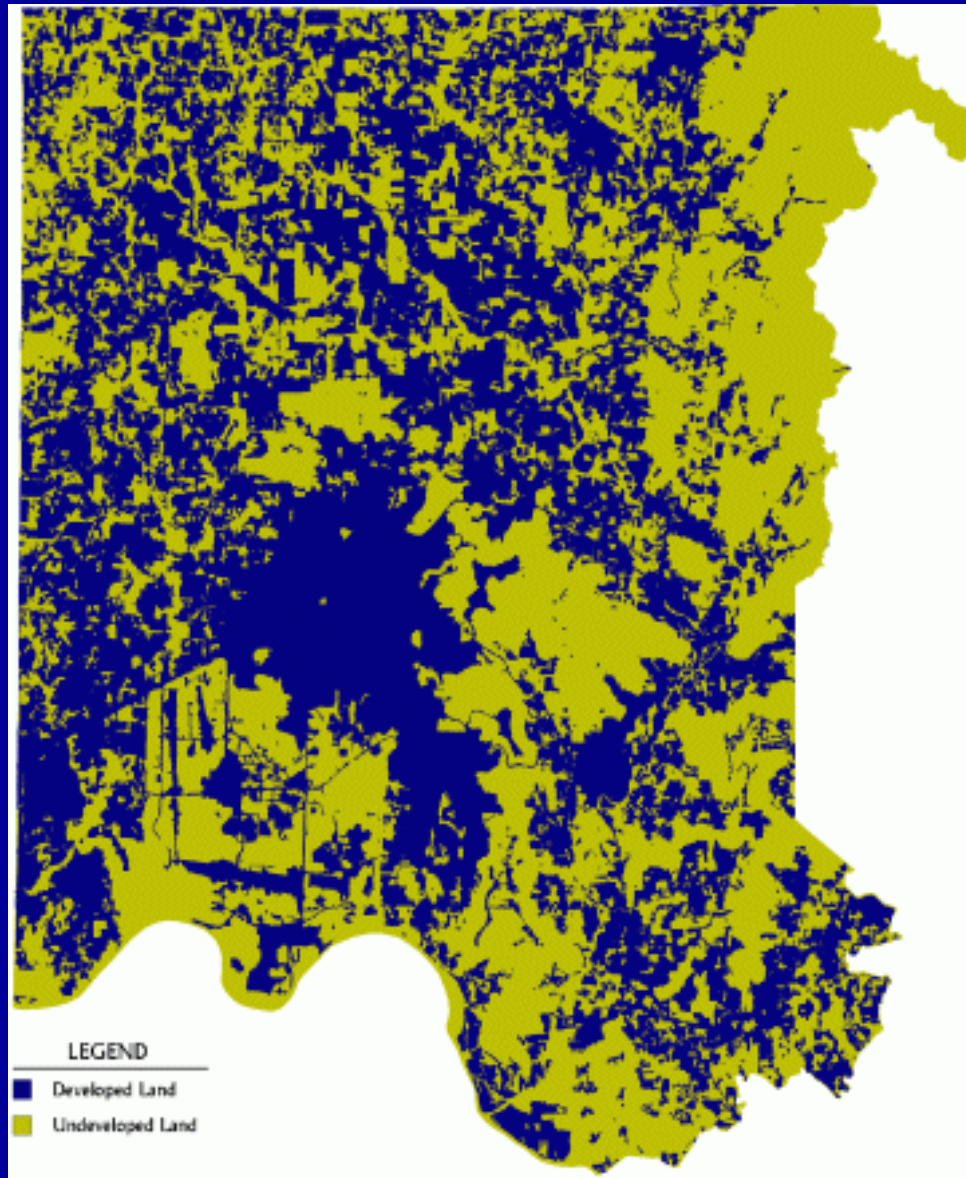
Development Patterns - Madison County, AL

Source: Land Trust for Huntsville and North Alabama



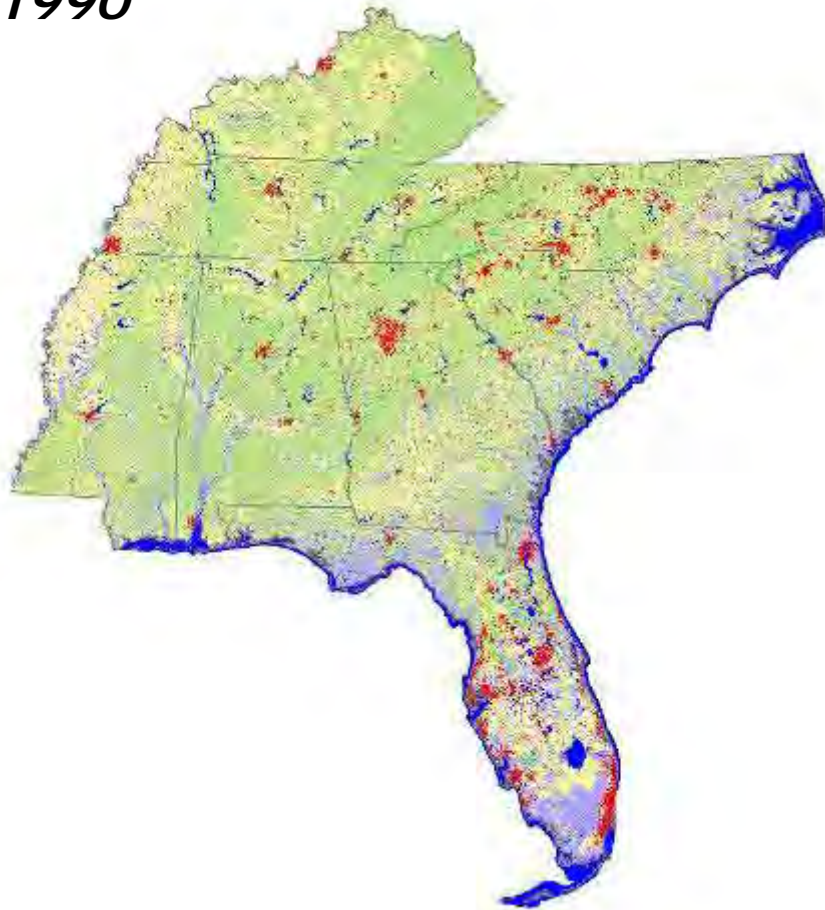
Projected Development – 2020

Source: Land Trust for Huntsville and North Alabama

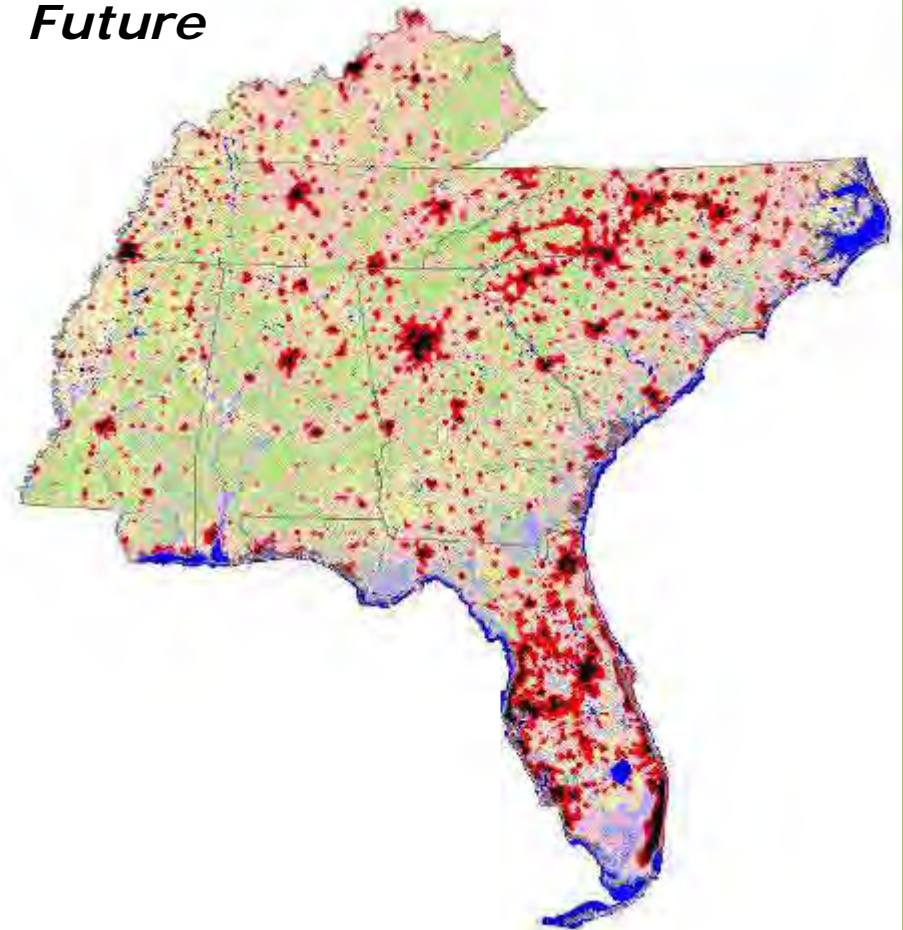


Land Consumption

1990



Future

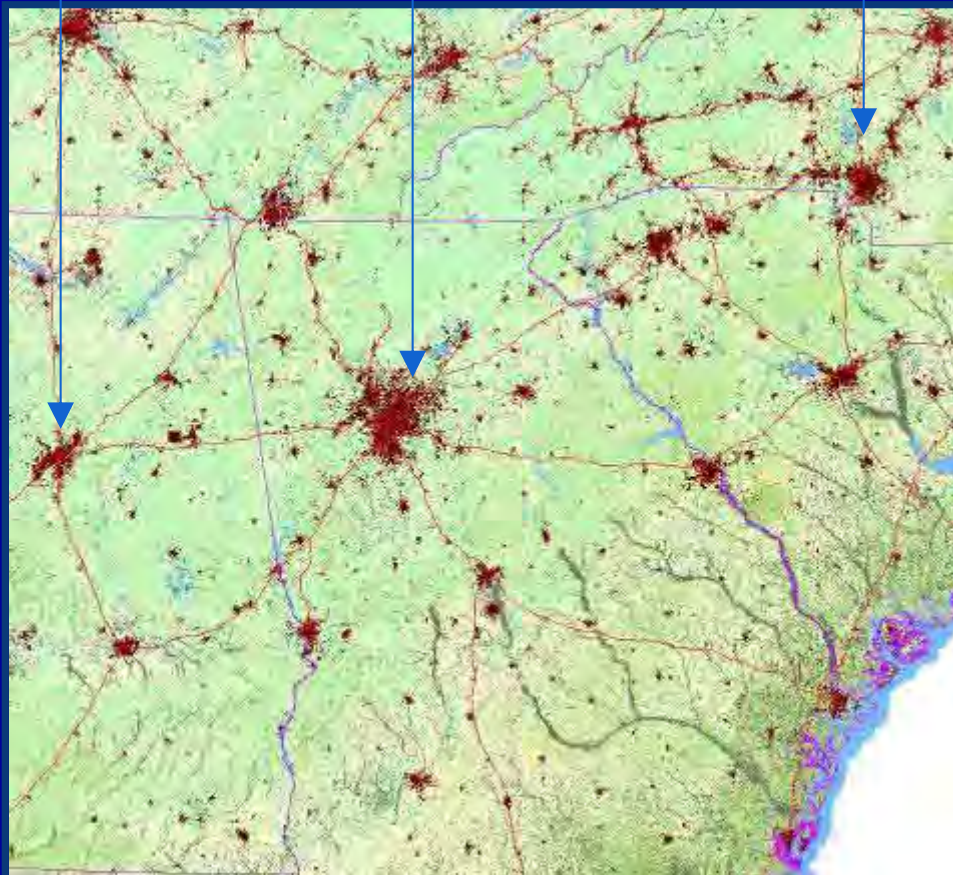


A Future Look ...

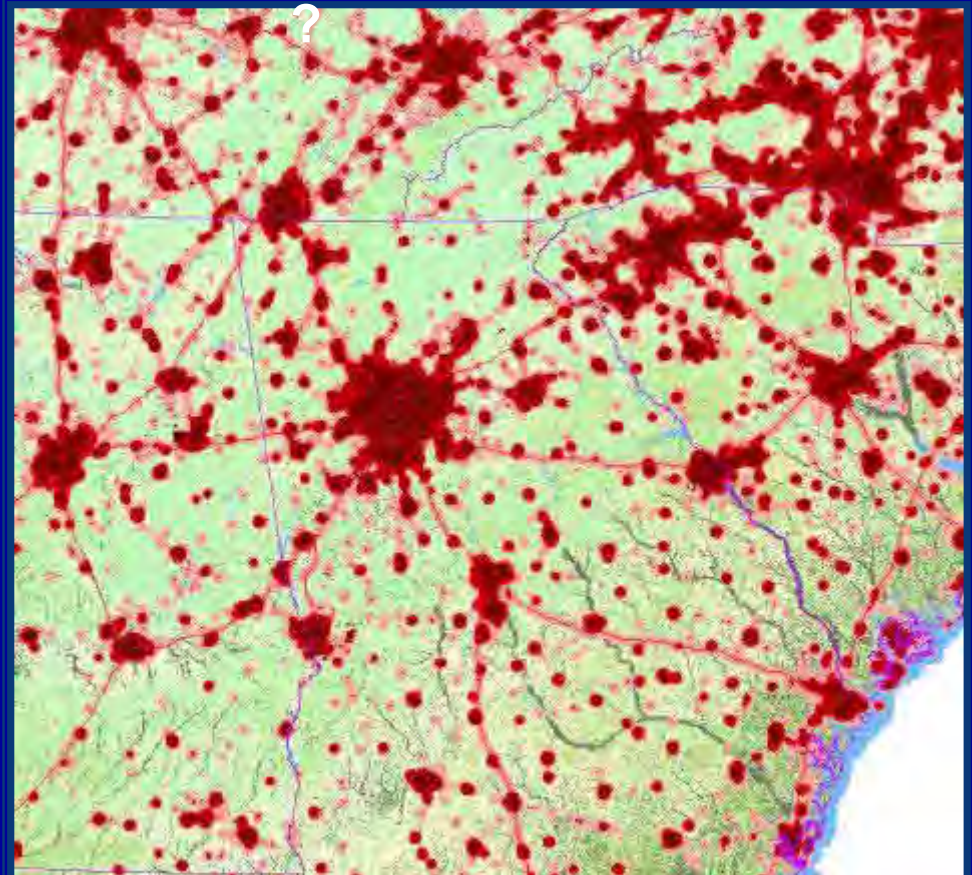
Birmingham

Atlanta

Charlotte



Charlantingham



Major Regional Issues and Needs in the Next Decade

- Land use effects on water sources
- Resistance to land use planning
- Need for training & technical assistance
- Need to build consensus to change
- Need to establish working partners & leverage limited resources

Education & Special Reports



Training Resources

- Community Quality Growth Training
 - Community Quality Growth Workshop series
 - Site Planning Roundtable Training
 - Public Facilitation & Conflict Resolution
 - Specialty Training (TMDL, Floodplain management)
-
- 200 communities have reviewed their codes
 - 40 are making changes

Southeast Watershed Leadership Academy



- 3-day intensive training in tools & techniques to change land use practices
- Consensus-public facilitation
- 110 local trainers in 13 states
- Track progress over time

Creating a Regional Resource Center

www.watershed-assistance.net

SOUTHEAST WATERSHED ASSISTANCE NETWORK

> HOME > SITE MAP > CONTACT US > JOIN EMAIL LIST

RESOURCES CALENDAR ABOUT US B&B-SUSTAINABLE BUILDING SOUTHEAST WATERSHED FORUM

Resources

- Home
- Resources**
- Search
- Watershed Management
- Library
- SE Organizations
- Funding
- Organization Development
- Community Outreach
- Growth Readiness
- Consensus Building
- Data Resources
- Sustainable Building
- Submit New Resource

Welcome to the SWAN resource page, here you will find up to date information on smart growth and watershed protection issues. If you need specific information use our keyword search to locate web resources, reports and case studies. If you are after information on a general topic explore the categories below.

SUBMIT NEW RESOURCE

Keyword Search:

Categories:

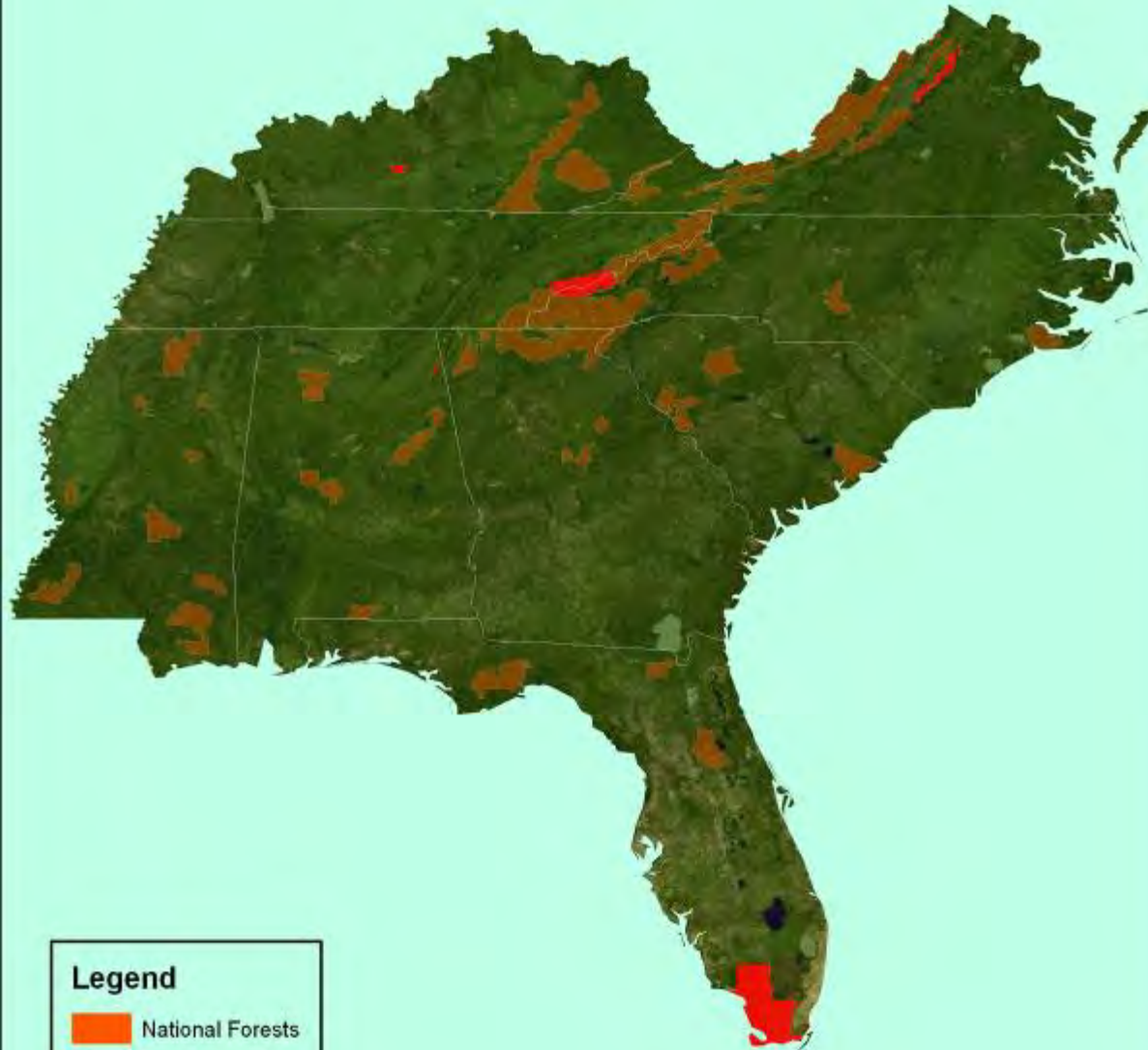
- [Growth Readiness](#)
- [Watershed Management](#)
- [Library](#)
- [SE Organizations](#)
- [Funding](#)
- [Organization Development](#)
- [Community Outreach](#)
- [Sustainable Building](#)
- [Consensus Building](#)
- [Data Resources](#)

Partnership for Land & Water Protection

Build a regional, web-based map & database of privately-protected land...

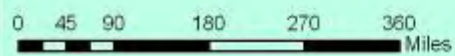
- To build partners in land & water protection,
- To assist communities in land use planning,
- To provide a baseline to measure land/water protection efforts over time

***Southeast Watershed Forum:
Initial Protected Land File from
ESRI***

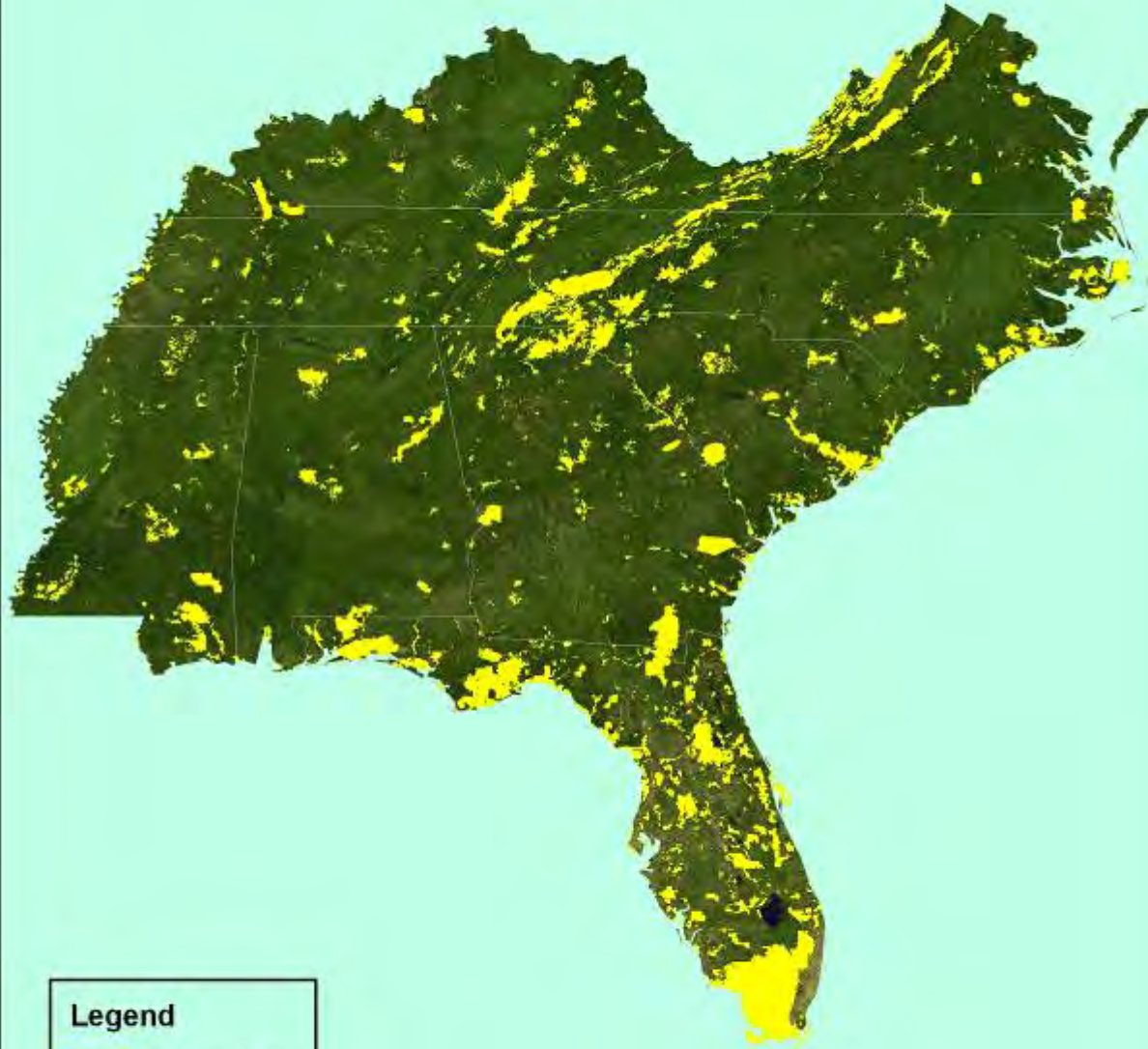


Legend

-  National Forests
-  National Parks

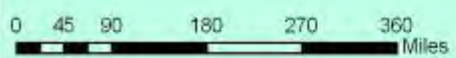


***Southeast Watershed Forum:
Protected Areas File Created from
Compilation of Public and Private Datasets***

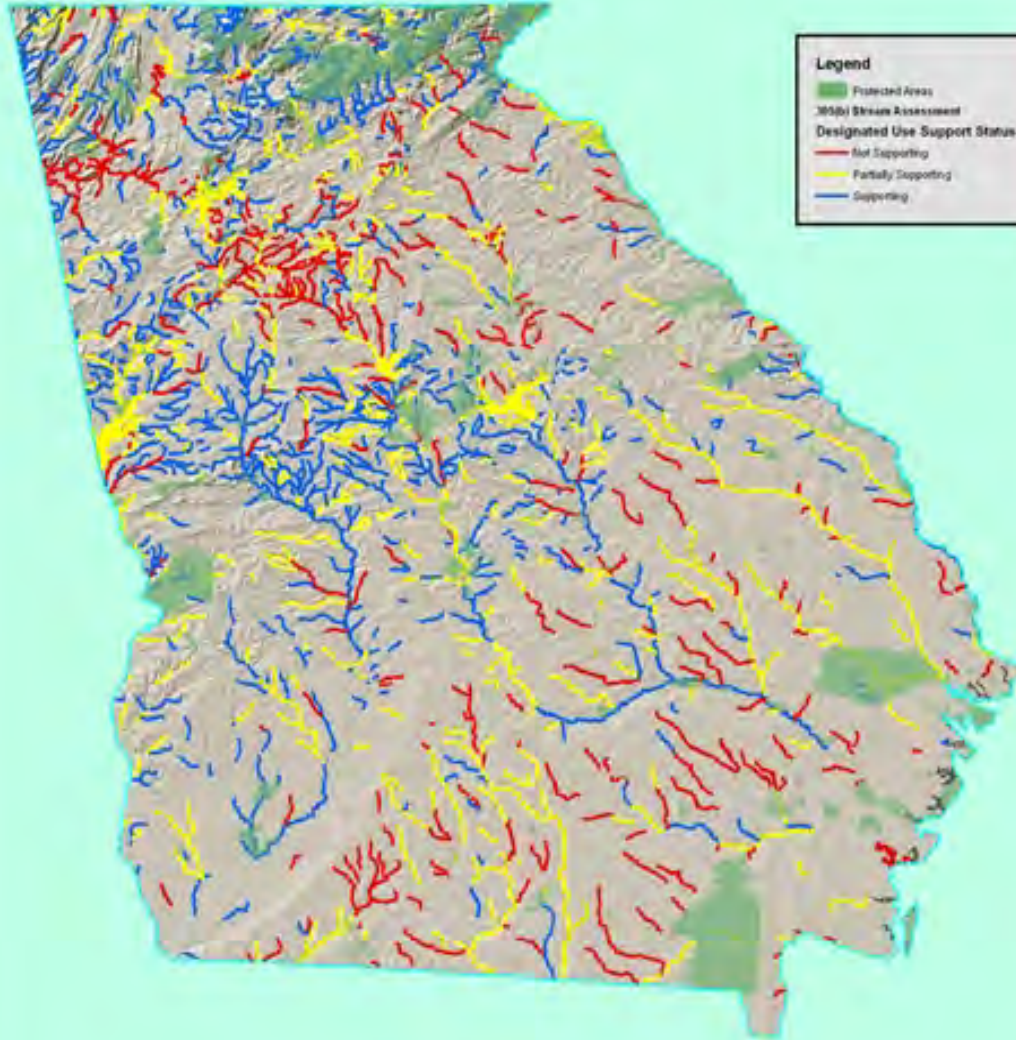


Legend

 Protected Areas



Southeast Watershed Forum Survey Results: Stream Assessment and Protected Areas

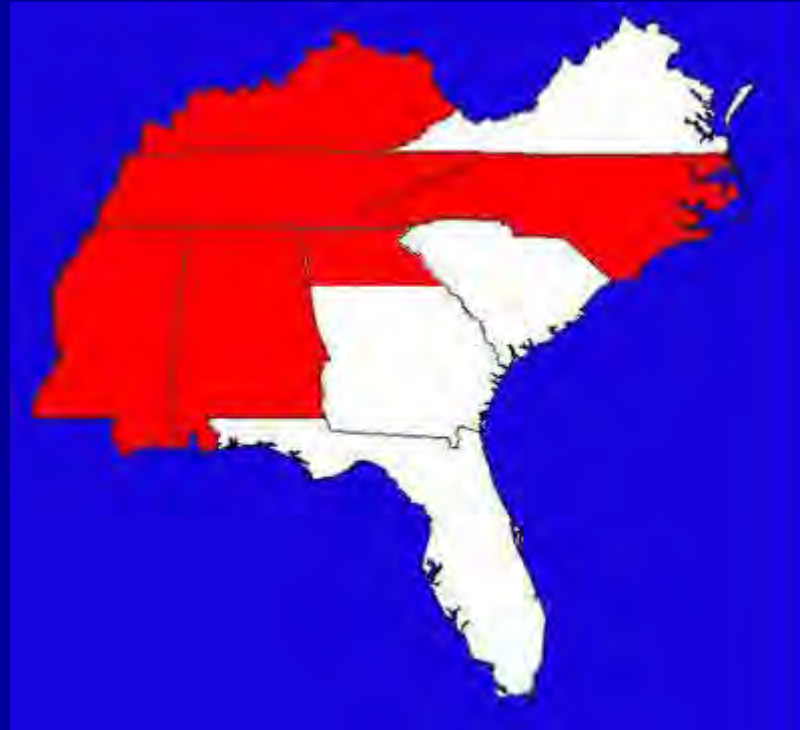


Legend

- Protected Areas
- 2006 Stream Assessment
- Designated Use Support Status
- Not Supporting
- Partially Supporting
- Supporting



The Role of the State & Regional Watershed Roundtable



What is a Watershed Roundtable ...

a program that bring together a **broad representation** of stakeholders in a **neutral setting** to:

1. foster dialogue,
2. build partnerships and
3. improve water protection & restoration.

Roundtables showcase ...

- Diverse stakeholder representation
- Success stories to replicate
- Active, rather than passive approach
- Facilitated discussions
- Commitments to action

Role of State Roundtables

- Enhance networking
- Encourage working watershed partnerships
- Engage local people in the watershed process
- Forge commitments to on-the-ground activity
- Create a constituency for watershed protection

2005 OUTCOMES

State/Watershed Breakout Sessions

- 34% Built new partnerships
- 37% Developed new initiatives
- 64% Will change the way we do business
- 27% May change the way we do business



Participate in State/Watershed Discussions

- Your ideas are being sought on ways to increase your effectiveness in watershed protection
- We'll share with agencies, especially EPA, as it develops a national capacity-building strategy.
- You have a chance to make a difference...

Facilitated Breakout Sessions

1. How can you achieve more measurable results in addressing 303d streams?
2. How can state & federal agencies build capacity to help you achieve better results?
3. What action will you agree to do to improve your local water quality?